

EVIDENCE OFFLOAD

Streamline Evidence Offload

Many crimes today have a digital component, and law enforcement personnel are constantly under pressure to process evidence while maintaining the chain of custody.

Working with global law enforcement agencies, Rimage has developed an Evidence Offload system that fits into all areas of digital evidence workflows. Automatically offload digital evidence from multiple sources onto CD/DVD/Blu-ray Disc™ media for universal distribution and long-term, secure archiving—all while saving time and improving accuracy.

Benefits

Quick and easy offload

Maximize productivity by offloading digital evidence from non-proprietary devices to CD/DVD/Blu-ray Disc media for distribution and archive—all from one hands-free system.

Intuitive interface

Offload digital evidence to CD/DVD/Blu-ray Disc media quickly and easily with the optional touch screen interface—no training required.

Increased accuracy

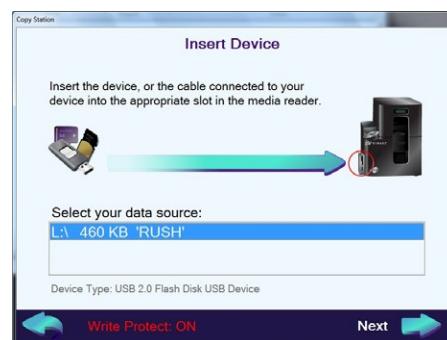
Eliminate concerns about evidence accuracy. The Evidence Offload solution automatically creates a final MD-5 verification of all digital data.

Distribution ready

Rimage's Everest® thermal retransfer technology permanently prints customizable information directly to the disc in under a minute, improving traceability.

Features

- Rimage multi-functioning Evidence Media Reader
- Easy-to-use touch screen interface, optional
- Evidence Offload Software
- Everest® thermal-retransfer technology—scratch-proof, waterproof, fade-resistant and UV-protected direct-to-disc printing
- MD-5 disc hashing
- Seamlessly integrates with optional Rimage Forensic Software to allow processing of most other portable media storage devices.



Evidence Offload Software



Evidence Media Reader

Works with

- EDS 5410N
- EDS 8200N

MEDIA READER COMPATIBILITY

| | |
|-----------------------------------|---|
| USB | USB 2.0 USB 3.0 |
| Flash Drives | CompactFlash® MicroDrive™ |
| Memory Cards | Memory Stick® Memory Stick® DUO DUOMemory Stick® PRO Magic Gate® |
| SD Cards | miniSD MicroSD Secure Digital® Secure Digital® High Capacity MultiMedia® Card MMCplus v4.0 Reduce Size MultiMedia |
| Picture Cards | xD-Picture® Card |
| SUPPORTED RIMAGE PLATFORMS | |
| Producer | EDS 8200N w/ integrated Everest® 600 printer and high-resolution camera |
| Professional | EDS 5410N w/ integrated Everest® 400 printer and high-resolution camera |
| Software Requirements | Disc Copy Station Software v2.3 or higher |

For a complete list of specifications for Rimage 8200N and 5410N Evidence Disc Systems, visit www.rimage.com.

We Recommend

Rimage Maintenance Agreements

Maximize your ROI and minimize downtime when quick problem resolution is a must. With our range of skilled technicians and industry-leading support services, Rimage has a maintenance plan that meets your needs.

Rimage Media Kits

Get reliable, uninterrupted performance from your Evidence Disc System. With optimized print ribbons and discs, Media Kits give you the best-looking, longest-lasting results in one convenient and affordable package.



For a complete description of Rimage Maintenance Agreements and Media Kits available for the Rimage Evidence Disc System, visit www.rimage.com

Blu-ray Disc™ is a trademark of the Blu-ray Disc Association.