

AEC-7763LC/7763LD & ARS-2022/2022D Copy Smart Plus

User's Manual

— Ver: 1.0 —

Attention:

It takes over 5 seconds to power on after shutdown otherwise the system may operate abnormally.



Copyright © 2003 ACARD Technology Corp.

Release: May 2003



Copyright and Trademark

The information in this manual is subject to change without prior notice and does not represent a commitment on the part of vendor, who assumes no liability or responsibility for any errors that may appear in this manual.

ACARD and SCSI are the trademarks of ACARD Technology Corp.

This manual contains materials protected under International Copyright Laws. All rights reserved. No part of this manual may be reproduced, transmitted or transcribed without the expressed written permission of the manufacturer and author of this manual.

ACARD's ARS-2021D/2021DS Copy Smart Plus are merely used for copying and editing personal audio and video data. Violating Copy Right is a criminal act. ACARD's Copy Smart Plus only supports legal backup operation.

ACARD Technology Corp. is not responsible for the user's illegal actions.

Table of Contents

Chapter 1 Introduction	6
1.1 Features	6
1.2 Specification	6
Chapter 2 Installation	7
Chapter 3 Basic Instructions	8
3.1 Buttons and LCD	8
3.2 About HDD Installation	9
3.2.1 With a HDD	9
3.2.2 Without a HDD	10
Chapter 4 Board Layout	11
Chapter 5 Functions	12
5.1 Copy	12
5.2 Test	13
5.3 Test & Copy	14
5.4 Verify	15
5.5 Compare	15
5.6 Prescan	17
5.7 Disc Info	18
5.8 Select Source	18
5.9 Image	19
5.9.1 Load	19
5.9.2 Delete Image	20
5.9.3 Image Info	21
5.9.4 Compare Image	21
5.9.5 Select Image	23
5.9.6 Select Src Drive	23
5.10 Edit Track (for CD only)	24
5.10.1 CD to CD	25
5.10.2 CD to HDD	29
5.10.3 Play Audio Track	34

5.10.4 Close Session	34
5.11 Setup	35
5.11.1 Language	36
5.11.2 CD Burn Speed.....	36
5.11.3 DVD Burn Speed	37
5.11.4 Read Speed	37
5.11.5 Auto Start Drive	38
5.11.6 Startup Menu	38
5.11.8 Auto Compare	39
5.11.7 Auto Verify	39
5.11.9 Auto Prescan	40
5.11.10 Eject Disc	40
5.11.11 Burn On The Fly	41
5.11.12 Burn Mode.....	42
5.11.13 Button Sound	42
5.11.14 Device Info	43
5.11.15 System Info	44
5.11.16 Quick Erase	44
5.11.17 Full Erase	45
5.12 Adv Setup	46
5.12.1 UnderRun Protect	46
5.12.2 Overburn	47
5.12.3 Read Error Skip	47
5.12.4 Format HDD	48
5.12.5 Verify HDD	48
5.12.6 Burn-in	49
5.12.7 Update Firmware	50
5.12.8 Compare Firmware	51
5.12.9 H/W Diagnostic	51
5.12.10 Load Default	52
5.12.11 CD+G	52
5.12.12 ISRC & MCN	53
Chapter 6 Troubleshooting	54
6.1 About LCD	54
6.2 About Error Messages.....	54

6.3	About DVD-ROM/DVD Writer	54
6.4	About Buttons	55
6.5	About DVD Writer Not Readable	55
6.6	About High Failure Rate	55
6.7	About Firmware Update	55
6.8	About Function 12 and Cancellation	56
Appendix 1	List of Functions	57
Appendix 2	LCD Messages	59

Chapter 1 Introduction

The four models AEC-7763LC, AEC-7763LD, ARS-2022, and ARS-2022D are somewhat different in mechanical design, but have the same functions of duplication. AEC-7763LC and ARS-2022 are simply for copying CD in video, audio or data form while AEC-7763LD and ARS-2022D for copying CD and DVD. They all have multi-functional LCDs and 4 simple buttons on the panels. With any of them duplication will be easier and more efficient.

1.1 Features

- On-board ACARD SOC (System On Chip) engine.
- 2 independent IDE channels.
- Power-on self test.
- Support internal 3.5" ATA66/100/133 HDD.
- User-friendly interface with messages on LCD panel.
- Fast copying on high-speed CD/DVD writers, etc.
- Easy operation without installing software or extra training.
- Firmware update through CD/DVD-ROM.

1.2 Specification

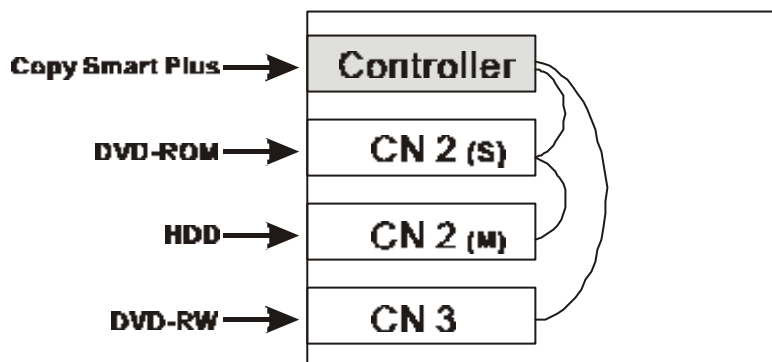
Power	Voltage: 5VB±5% Current: 0.5A Max
Environment	Operation: 0°C to 70°C Storage: -20°C to 85°C
Humidity	15% to 90%
Connector	Two 40-pin internal IDE connectors
Cable	ATA-66 (below 46 cm)

For related information, please visit <http://www.acard.com>

Chapter 2 Installation

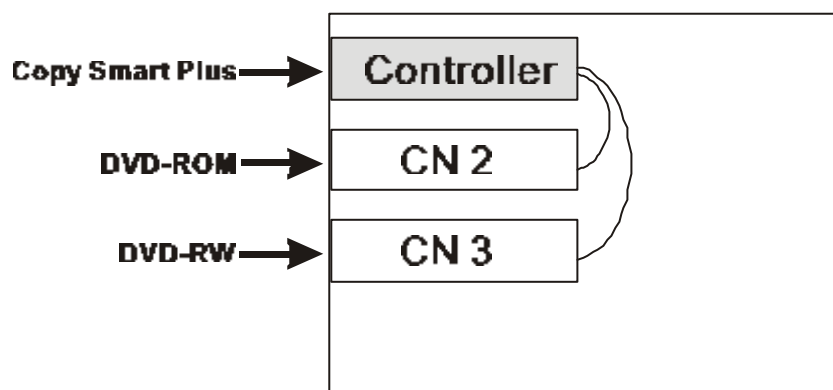
From this chapter on we only take ARS-2022D as an example to explain. The hardware connection of ARS-2022D can be with or without a hard drive.

Hardware Connection of ARS-2022D with a HDD



The hard drive must be connected to port CN2 and in Master mode. DVD-ROM must be in Slave mode.

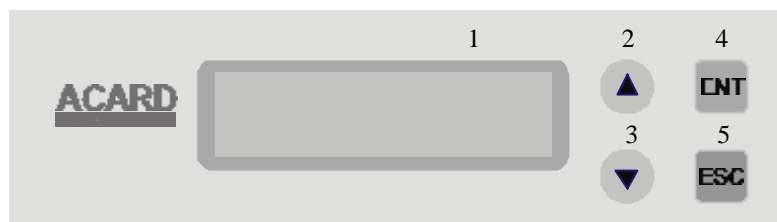
Hardware Connection of ARS-2022D without a HDD



Chapter 3 Basic Instructions

3.1 Buttons and LCD

There are four buttons and an LCD on the panel of ARS-2022D. They are described as follows.



1. It shows all functions and messages.
2. It is used to scroll up functions or menus.
3. It is used to scroll down functions or menus.
4. It is used to execute a selected function.
5. It is used to cancel a selected function.

After ARS-2022D detects installed hardware like DVD-ROM, DVD writer upon powering on, it will execute a self-test for seconds. When the self-test finishes, LCD will show the messages as follows.

1.

DVD Duplicator
1-1 ver: 1.78Z
2.

Initialize SDRAM

3.

Detect Drives

4.

1. Copy

There are 12 functions for you to use. Function 1 is Copy. You can press ▼ to see other functions.

3.2 About HDD Installation

With a 3.5" hard drive you can use and enjoy the function of Image. In other words, you have one more choice to duplicate a CD or DVD from an image file stored in the hard drive.

3.2.1 With a HDD

If you install a 3.5" hard drive to ARS-2022DS, the operation procedures will be as follows.

- Once ARS-2022D detects the hard drive, it will ask if you want to format or not. In CD a partition has 1GB while in DVD 5GB.
- Use function 8 Select Source to set the hard drive as the source.
- In function 9 Image select a partition to store the data.
- If there is no data in a selected partition, place a source DVD into DVD-ROM and use function 9-01 Load to transmit data from DVD into the selected partition by pressing **ENT**. Different data can be stored in different partitions.
- Switch to function 1 Copy by pressing ▲ . Place a blank DVD disk into the DVD writer, and press **ENT** to start copying.
- When copying comes to an end, the passed DVD will eject automatically. The default is automatic ejecting, but you can change it.
- The failed DVD will remain in the writer. The default is keeping a failed DVD in the writer, but you can change it. To take the failed DVD you need to press the button on the writer.
- During operation do not press any button on ARS-2022D, because interruption will harm the device, and DVD will be damaged.

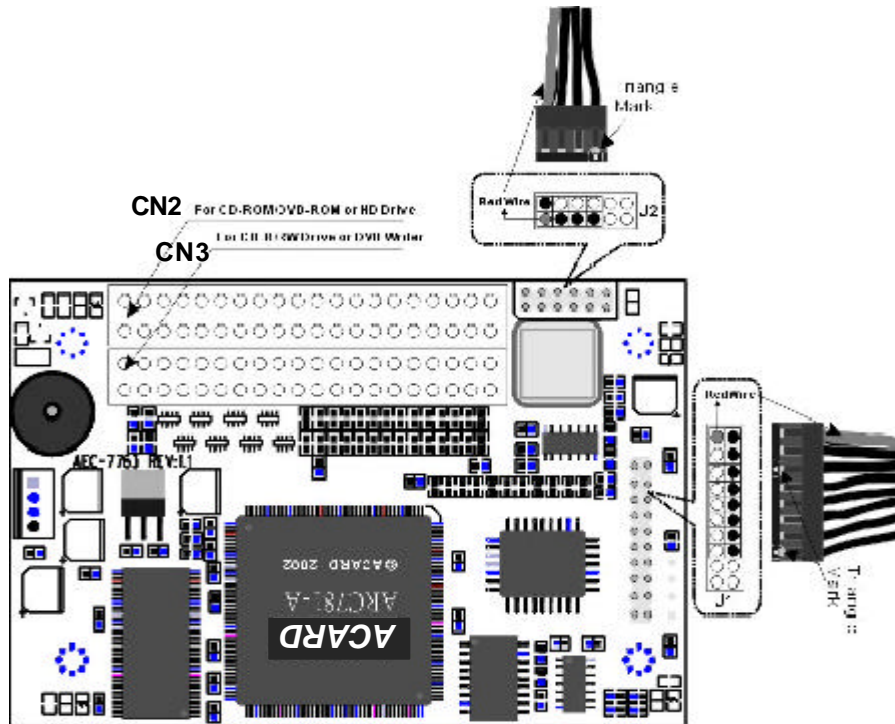
3.2.2 Without a HDD

If you don't install a 3.5" hard drive to ARS-2022D, the operation procedures will be as follows.

- Place a source DVD into DVD-ROM.
- Switch to function 1 Copy by pressing ▲ . Place a blank DVD disk into the DVD writer, and press **ENT** to start copying.
- When copying comes to an end, the passed DVD will eject automatically. The default is automatic ejecting, but you can change it.
- The failed DVD will remain in the writer. The default is keeping a failed DVD in the writer, but you can change it. To take the failed DVD you need to press the "eject" button on the writer.

Chapter 4 Board Layout

The board layout of ARS-2022D is shown as follows.



Chapter 5 Functions

There are 12 functions: Copy, Test, Test & Copy, Verify, Compare, Prescan, Disc Info, Select Source, Image, Edit Track, Setup and Advanced Setup. Among the 12 functions, Edit Track is designed exclusively for editing a collection of favorite songs from CDs. During operation if you do not understand an LCD message, you can see Appendix 2.

5.1 Copy

Function 1 Copy is to copy data from a source DVD directly into a blank DVD disk. Before copying be sure that the source DVD is placed onto DVD-ROM, or there are data in a certain partition if you have installed a hard drive. If you are not so sure of real copying, you can use Function 2 Test to simulate first.

Select function 1. Put a source DVD onto DVD-ROM and a blank DVD disk onto the DVD writer. A DVD rewriteable disk containing old data is usable, too.



1.Copy

After the DVD-ROM and DVD writer detect DVDs, press **ENT** to start copying. LCD will show the copying information as follows.



Copying- DVD 0%
4213.4MB 15:00

When copying is in progress, MB and time will decrease whereas the percentage of completion will increase.

When copying comes to an end, LCD will show the results as follows. The passed DVD will eject automatically.

1.Copy
OK: 01

5.2 Test

Function 2 Test is to simulate the copying progress. When simulation finishes, there will be no data really written into the DVD disk.

Select function 2. Put a source DVD onto DVD-ROM and a blank DVD disk onto the DVD writer.

2.Test

Press **ENT** to start simulation. If you use a DVD rewriteable disk that contains data, the old data will be quickly erased before simulation as shown below.

Erasing disc

LCD will show the testing information as follows.

Testing- DVD 0%
4213.4MB 15:00

When the test comes to an end, LCD will show the results as follows.

2.Test
OK: 01

Stopping the test halfway does not affect the DVD disk, but if the DVD rewriteable disk contains important data, they may be destroyed.

5.3 Test & Copy

Function 3 Test & Copy is to test first and then copy actually.

Select function 3. Put a source DVD onto DVD-ROM and a blank DVD disk onto the DVD writer.

3.Test & Copy

Press **ENT** to start simulation. LCD will show the testing information as follows.

Testing- DVD 0%
4213.4MB 15:00

When the test finishes, actual copying will begin as shown below.

Copying- DVD 0%
4213.4MB 15:00

When the whole process finishes, LCD will show the results as follows.

3.Test & Copy
OK: 01

5.4 Verify

Function 4 Verify is to examine if the target DVD can be read correctly after copying.

Select function 4.

4.Verify

Press **ENT** to verify. LCD will show the verification information as follows.

Verify- DVD 0%
4213.4MB 15:00

When verification comes to an end, LCD will show the results as follows.

4.Verify
OK: 01

5.5 Compare

Function 5 Compare is to make a comparison between the source DVD and the target DVD after copying.

AEC-7763LC/LD & ARS-2022/2022D

Select function 5. Put the source DVD onto DVD-ROM and the target DVD onto DVD writer.

5.Compare

Press **ENT** to compare. LCD will show the comparison information as follows.

Compare- DVD 0%
4213.4MB 15:00

When comparison comes to an end, LCD will show the results as follows.

Compare OK: 1
Fail: 0 Diff: 0

Press **ENT** to see the details of source 1 as shown below.

Src: 01 DVD-ROM
Total: 4213.4MB

Press **ENT** to see the details of source 2. If the comparison is identical, LCD will show the message as follows.

Src: 02 DVD-RW
Identical

If comparison fails, LCD will show the failure. By pressing **ENT** twice, LCD will show that the contents of source 1 and those of source 2 do not match as follows.

**Src: 02 DVD-RW
TOC not match**

5.6 Prescan

Function 6 Prescan is to scan if the source DVD can be read correctly, and by the way to test the reading speed.

Select function 6. Put the source DVD onto DVD-ROM.

6.Prescan

Press **ENT** to prescan. LCD will show the scanning information as follows.

**Scanning- DVD 0%
4213.4MB 15:00**

When scanning finishes, and the source DVD can be read correctly, LCD will show the results as follows.

PreScan OK!

5.7 Disc Info

Function 7 Disc Info is to show the basic information of source DVD.

Select function 7. Put the source DVD onto DVD-ROM.

7.Disc Info

Press **ENT**, and LCD will show the DVD information as follows.

Disc Type: DVD-ROM
Capacity: 4213.4MB

5.8 Select Source

Function 8 Select Source is to let you select the data on DVD-ROM, DVD writer or HDD as the source from which copying will be done.

Select function 8.

8.Select Source

Press **ENT**, and then press **▲ ▼** to select the source as shown below.

Src: DVD-ROM
01 IDE1 Master

After selecting the source such as DVD-ROM, you can press **ENT**, and LCD will show the message as follows.

A rectangular box representing an LCD display with the text "DVD-ROM selected!" centered inside.

Suppose you select HDD as the source and try to copy from one of its partitions, but the partition contains no data, an error message will appear on LCD. At this moment, you can switch to another partition that contains data, or use function 9 Image to load the data into the chosen partition first.

5.9 Image

Function 9 Image is valid only when you have installed a hard drive. This function includes 6 parts. They are Load, Delete Image, Image Info, Compare Image, Select Image and Select Src Drive. The loaded data is called an image file.

Select function 9.

A rectangular box representing an LCD display with the text "9.Image" centered inside.

5.9.1 Load

On the above figure press **ENT**, and you will enter the following figure. The function Load is to let you load data from DVD-ROM or DVD writer into the current partition of the hard drive. P:A means partition A.

A rectangular box representing an LCD display with the text "9-01.Image P: A Load" centered inside.

Press **ENT** to load. LCD will show the loading information as follows.

Load- A - DVD 0%
4213.4MB 15:00

After the image file is successfully loaded, LCD will show the results as follows.

Image load OK

If there is an image file existing in the current partition, the system will ask you whether to overwrite it or not. Please use ▲ ▼ to confirm Yes or No.

Image Exists
Overwrite?Yes

5.9.2 Delete Image

If you want to empty an image file stored in a particular partition, you can use the function Delete Image to do so. First, select the function by pressing ▼.

9-02. Image P: A
Delete Image

The system will ask if you are sure to delete. Use ▲ ▼ to confirm Yes or No.

Delete Image in
Partition A?Yes

After the image file is deleted, LCD will show the results as follows.

**Partition A:
Image is deleted**

5.9.3 Image Info

This function is to show the basic information of an image file stored in a particular partition. First, select the function by pressing ▼.

**9-03.Image P: A
Image Info**

Press **ENT**, and LCD will show the information of the image file as follows.

**Disc Type: DVD-ROM
Capacity: 4213.4MB**

5.9.4 Compare Image

This function is to compare the contents of the source DVD (on the writer) and those of the image file in the partition. Comparison is impossible when source and destination are on the same IDE bus. Now select the function by pressing ▼.

**9-04. Image P: A
Compare Image**

AEC-7763LC/LD & ARS-2022/2022D

Press **ENT**, and LCD will show the comparison information as follows.

Compare- DVD 0%
4213.4MB 15:00

When comparison comes to an end, LCD will show the results as follows.

Compare OK: 1
Fail: 0 Diff: 0

Press **ENT** to see the details of source 1 as shown below.

Src: 01 DVD-ROM
Total: 4213.4MB

Press **ENT** to see the details of source 2. If the comparison is identical, LCD will show the message as follows.

Tgt: 00 HDD P: A
Identical

If comparison fails, LCD will show the failure. By pressing **ENT** twice, LCD will show that the contents of source 1 and those of source 0 do not match as follows.

Tgt: 00 HDD P: A
TOC not match

5.9.5 Select Image

This function is to select an image file from a certain partition in the hard drive. First, select the function by pressing ▼.

9-05.Image P: A
Select Image

After installing a hard drive, ARS-2022D will format it automatically. Each partition occupies 5GB. The number of partitions is dependent on the hard drive's capacity. The partitions are alphabetically arranged. Select a partition by pressing **ENT**, and LCD will show the message as follows.

Select Partition
A: DATA 627MB

After the partition is selected, LCD will show the results as follows.

Set Partition to
A

5.9.6 Select Src Drive

This function is to select DVD-ROM or DVD writer as the source from which you can load data into a certain partition as an image file.

First, select the function by pressing ▼.

9-06. Image P: A
Image Src Drive

Then, use ▲ ▼ to select DVD-ROM or DVD writer as the source.

Select Img Src:
01 IDE1 DVD-ROM

After selecting the source such as DVD-ROM, you can press **ENT**, and LCD will show the message as follows.

Load image from
Drive ID-01

5.10 Edit Track (for CD only)

Function 10 Edit Track is exclusively designed for editing a collection of favorite songs from CDs. In other words, it can collect different tracks (songs) on a number of CDs and merge them into a single CD. This function includes 4 parts. They are CD to CD, CD to HDD, Play Audio Track and Close Session.

Select function 10.

10. Edit Track

5.10.1 CD to CD

On the above figure press **ENT**, and you will enter the following figure. Here the function CD to CD is to let you select a track or more from CD-ROM, and then copy into a blank CD-R/RW.

10-01. Edit Track
CD to CD Edit

On the above figure press **ENT**, and you will enter the following figure. Here 1/10 means the number one of the 10 tracks, and 03:25 means the playing time.

Select Track:
1/10 03:25

You can press ▼ to see the second track and so on. Suppose we decide to select the first track, then press **ENT**. A “+” will appear beside 1/10 as shown below. But pressing **ENT** again may cancel the selection.

Select Track:
+1/10 03:25

After selecting, please use ▲ to move to the “End” menu as shown below.

**Select Track:
End 1Trk03:25**

Press **ENT** to finish the CD editing, and use ▲ ▼ to confirm Yes or No.

**End edit disc
and burn?Yes**

LCD will show the copying information as follows.

**Copying- 24X Edit
1/10 - > 1/1**

On the above figure 1/1 means the first track of all tracks we have selected, and here we have just selected one track. When copying comes to an end, LCD will show the message as follows.

**Burn Complete!
OK: 01**

The system will ask if you want to keep editing. Please use ▲ ▼ to confirm Yes or No as shown below.

**Continue edit
next Disc?Yes**

If you want to keep editing, the current source CD will eject automatically, and the system will ask you to insert another new CD as shown below.

Insert next disc

After inserting the new CD, press **ENT** to edit as before. Suppose we decide to select the second track, then press **ENT**. A "+" will appear beside 2/10 as shown below.

Select Track:
+2/10 04:25

After selecting, please use ▲ to move to the "End" menu as shown below.

Select Track:
End 1Trk04:25

Press **ENT** to finish the CD editing, and use ▲ ▼ to confirm Yes or No.

End edit disc
and burn?Yes

LCD will show the copying information as follows.

Copying- 24X Edit
2/10 - > 2/2

AEC-7763LC/LD & ARS-2022/2022D

On the above figure 2/2 means the second track of all tracks we have selected, and so far we have selected two tracks from two different CDs. When copying comes to an end, LCD will show the message as follows.

Burn Complete!
OK: 01

The system will ask if you want to keep editing. Suppose we don't like to continue, then press ▼ to confirm No.

Continue edit
next Disc?No

On the above figure Press **ENT**. The system will ask if you want to close all CDs' sessions. Please use ▲ ▼ to confirm Yes or No as shown below.

Close all disc's
session? Yes

After deciding to close, LCD will show the message as follows.

Closing Session
Please wait---

5.10.2 CD to HDD

After closing sessions, press **ESC** and ▼ to enter the following figure. Here the function CD to HDD is to let you select a track or more from CD-ROM, and then copy into a certain partition of HDD.

10-02. Edit Track
CD to HDD Edit

On the above figure press **ENT**, and you will enter the following figure. Here 1/10 means the number one of the 10 tracks, and 03:25 means the playing time.

Select Track:
1/10 03:25

Suppose we decide to select the first track, then press **ENT**. A "+" will appear beside 1/10 as shown below. But pressing **ENT** again may cancel the selection.

Select Track:
+1/10 03:25

After selecting, please use ▲ to move to the "End" menu as shown below.

Select Track:
End 1Trk03:25

Press **ENT** to finish the CD editing, and use **▲ ▼** to confirm Yes or No.

**End edit disc
and burn?Yes**

Then, the track as an image file will be loaded into HDD. LCD will show the loading information as follows.

**Load- P0 -24X Edit
1/10 - > 1/1**

When loading comes to an end, LCD will show the message as follows.

Image load OK

The system will ask if you want to keep editing. Please use **▲ ▼** to confirm Yes or No as shown below.

**Continue edit
next Disc?Yes**

If you want to keep editing, the current source CD will eject automatically, and the system will ask you to insert another new CD as shown below.

Insert next disc

After inserting the new CD, press **ENT** to edit as before. Suppose we select the second track, then press **ENT**. A "+" will appear beside 2/10 as shown below.

Select Track:
+2/10 04:25

After selecting, please use **▲** to move to the "End" menu as shown below.

Select Track:
End 1Trk04:25

Press **ENT** to finish the CD editing, and use **▲ ▼** to confirm Yes or No.

End edit disc
and burn?Yes

Then, the track as an image file will be loaded into HDD. LCD will show the loading information as follows.

Load- P0 -24X Edit
2/10 -> 2/2

When loading comes to an end, LCD will show the message as follows.

Image load OK

AEC-7763LC/LD & ARS-2022/2022D

The system will ask if you want to keep editing. This time please use ▼ to confirm No as shown below.

**Continue edit
next Disc?No**

Then, the system will ask if you want to burn from HDD into CD-R/RW or move into a partition. Please use ▲ to confirm Burn as shown below.

**Burn or Move to
partition?Burn**

After pressing ▲ , LCD will show the copying information as follows.

**Copy- P0 -24X 0%
1/2 Trk03:25**

When burning finishes, LCD will show the results as follows.

**Burn Complete !
OK: 01**

On the above figure press **ESC** to enter the following figure. Now press ▼ to move the data from HDD template into a certain partition.

**Burn or Move to
partition? Move**

After pressing ▼, you need to select a partition into which the data will be moved. Suppose we select A as shown below.

Select Partition
A

After pressing ENT, LCD will show the moving information as follows.

Moving to P: A
0%

When moving finishes, LCD will show the results as follows.

Moving to P: A
OK!

If the chosen partition has contained image data, the system will ask to overwrite or keep the data. Here please use ▲ to overwrite.

Image Exists
Overwrite?Yes

After pressing ▲, LCD will show the moving information as follows.

Moving to P: A
0%

When moving finishes, LCD will show the results as follows.

**Moving to P: A
OK!**

5.10.3 Play Audio Track

This function is to make ARS-2022D act as a music player. You can plug an AV terminal in the audio port on the back of the device, and enjoy the music.

On the above figure press **ESC** and ▼ to select the function.

**10-03. Edit Track
Play Audio Track**

Use ▲ ▼ to select the track you want to play.

**Select Track:
1/10 03:25**

After selecting and pressing **ENT**, LCD will show the playing information below.

**Playing Track-1
00:00 / 03:25**

5.10.4 Close Session

This function is to close a CD and let no data written into. After closing, you can put the CD on any normal player and listen.

On the above figure press **ESC** and ▼ to select the function.

10-04. Edit Track
Close Session

After pressing **ENT**, the system will ask if you are sure to close.

Close all disc's
session? Yes

After pressing **ENT**, LCD will show the message as follows.

Closing Session
Please wait---

When closing finishes, LCD will show the results as follows.

Closing Complete
OK :1 Fail :0

5.11 Setup

Function 11 Setup lets you change the default settings. Once you change a setting, remember to press **ENT** to save it. However, it is suggested to use the defaults for the optimal operation. This function includes 17 parts. They are Language, CD Burn Speed, DVD Burn Speed, Read Speed, Auto Start Drive, Startup Menu, Auto Verify, Auto Compare, Auto Prescan, Eject Disc, Burn On The Fly, Burn Mode, Button Sound, Device Info, System Info, Quick Erase and Full Erase.

Select function 11.

11. Setup

5.11.1 Language

On the above figure press **ENT**, and you will enter the following figure. The function Language lets you select a language in which messages can be shown on LCD.

**11-01. Setup
Language**

Press **ENT** to enter the following figure. Here the LCD only supports English. Japanese, Traditional Chinese and Simplified Chinese are optional.

**Language
English**

5.11.2 CD Burn Speed

On the above figure press **ESC** and ▼ to enter the following figure. The function CD Burn Speed lets you control the burning speed of CD writer.

**11-02. Setup
CD Burn Speed**

Press **ENT** to enter the following figure. The default is auto.

CD Burn Speed
Auto

5.11.3 DVD Burn Speed

On the above figure press **ESC** and ▼ to enter the following figure. The function DVD Burn Speed lets you control the burning speed of DVD writer.

11-03. Setup
DVD Burn Speed

Press **ENT** to enter the following figure. The default is maximum.

DVD Burn Speed
Maximum

5.11.4 Read Speed

On the above figure press **ESC** and ▼ to enter the following figure. The function Read Speed lets you control the reading speed of target DVD.

11-04. Setup
Read Speed

Press **ENT** to enter the following figure. The default is maximum, but there are still other choices: 32X, 16X and 8X.

**Read Speed
Maximum**

5.11.5 Auto Start Drive

On the above figure press **ESC** and ▼ to enter the following figure. Auto Start Drive is to copy or test automatically once you put a blank DVD onto the writer.

**11-05. Setup
Auto Start Drive**

Press **ENT** to enter the following figure. The default is Off. Press ▼ to select 1 (one blank DVD).

**Auto Start Drive
Off**

5.11.6 Startup Menu

On the above figure press **ESC** and ▼ to enter the following figure. Startup Menu lets you select any one of the functions except Adv Setup as the first item appearing on the menu whenever you turn on ARS-2022D.

**11-06. Setup
Startup Menu**

Press **ENT** to enter the following figure. The default is Copy. Of course you can select any other function as the first item, but remember to press **ENT**.

Startup Menu
1.Copy

5.11.7 Auto Verify

On the above figure press **ESC** and ▼ to enter the following figure. Auto Verify is to verify automatically if the target DVD can be read after copying.

11-07. Setup
Auto Verify

Press **ENT** to enter the following figure. The default is Off. Press ▼ to select On.

Auto Verify
Off

5.11.8 Auto Compare

On the above figure press **ESC** and ▼ to enter the following figure. Auto Compare is to compare automatically the source DVD and the target DVD after copying.

11-08. Setup
Auto Compare

Press **ENT** to enter the following figure. The default is Off. Press ▼ to select On.

Auto Compare
Off

5.11.9 Auto Prescan

On the above figure press **ESC** and ▼ to enter the following figure. Auto Prescan is to scan automatically if the source DVD can be read correctly, and by the way to test the reading speed.

11-09. Setup
Auto Prescan

Press **ENT** to enter the following figure. The default is Off. Press ▼ to select On.

Auto Prescan
Off

5.11.10 Eject Disc

On the above figure press **ESC** and ▼ to enter the following figure. Eject Disc provides three choices. They are Eject Good Only, Eject All Disc, and Do Not Eject. Eject Good Only means that the DVD will eject automatically only when it is copied successfully. Eject All Disc means that the DVD will eject automatically whether it is copied successfully or not. Do Not Eject means that you need to eject the DVD manually when copying finishes.

11-10. Setup
Eject Disc

Press **ENT** to enter the following figure. The default is Eject Good Only. Press ▼ to select Eject All Disc or Do Not Eject.

Eject Disc
Eject Good Only

5.11.11 Burn On The Fly

On the above figure press **ESC** and ▼ to enter the following figure. Burn On The Fly lets you control the copying methods. When the setting is On, the data will be copied directly from the source DVD to the target DVD. When the setting is Off, the data will be loaded into a partition of HDD first, and hence copying will be done.

11-11. Setup
Burn On The Fly

Press **ENT** to enter the following figure. The default is On. Press ▼ to select Off.

Burn On The Fly
On

If ARS-2022D doesn't connect with a hard drive, LCD will show the message as follows.

No Valid HDD !

5.11.12 Burn Mode

On the above figure press **ESC** to return to Function 11, and then select part 12 Burn Mode as the following figure shows. Burn Mode lets you control the burning modes. There are two modes: DAO (Disc At Once) and TAO (Track At Once). They support CD only. If the DVD writer doesn't support the mode you have selected, ARS-2022D will automatically switch to another mode.

11-12. Setup
Burn Mode

Press **ENT** to enter the next figure. The default is DAO. Press ▼ to select TAO.

Burn Mode
DAO

5.11.13 Button Sound

On the above figure press **ESC** and ▼ to enter the following figure. Button Sound lets you control the sound of a button when you press it.

11-13. Setup
Button Sound

Press **ENT** to enter the next figure. The default is On. Press ▼ to select Off.

Button Sound
On

5.11.14 Device Info

On the above figure press **ESC** and ▼ to enter the following figure. Device Info shows the basic information of the DVD-ROM and DVD writer you have installed.

**11-14. Setup
Device Info**

Press **ENT** to enter the next figure.

**01 IDE1 Master
DVD-ROM : PIONEER**

Press **ENT** to enter the next figure.

**DVD-ROM DVD-116
1.22**

Press ▼ twice to enter the next figure.

**02 IDE2 Master
DVD-RW : PIONEER**

Press **ENT** to enter the next figure.

**DVD-RW DVR-103
1.80**

5.11.15 System Info

On the above figure press **ESC** and ▼ to enter the following figure. System Info shows the information of the system.

**11-15. Setup
System Info**

Press **ENT** to enter the next figure.

**DVD Duplicator
1-1 ver: 1.54L**

Press **ENT** to enter the next figure.

**WINBOND: W29C040
2002 / 5 / 27 ACARD**

5.11.16 Quick Erase

On the above figure press **ESC** and ▼ to enter the following figure. Quick Erase is to erase the data on the DVD rewriteable disk quickly.

**11-16. Setup
Quick Erase**

Press **ENT** to enter the next figure. Use ▲ ▼ to confirm Yes or No.

**All data will be
lost, erase?Yes**

After confirming Yes and pressing **ENT**, LCD will show the message as follows.

**Erasing disc
00:00 (Quick)**

When erasing finishes, LCD will show the results as follows.

**Quick Erase
OK:01 Fail:00**

5.11.17 Full Erase

On the above figure press **ESC** and ▼ to enter the following figure. Full Erase is to erase the data on the DVD rewriteable disk completely. Compared with Quick Erase, Full Erase takes longer time to do the job.

**11-17. Setup
Full Erase**

Press **ENT** to enter the next figure. Use ▲ ▼ to confirm Yes or No.

**All data will be
lost, erase?Yes**

After confirming Yes and pressing **ENT**, LCD will show the message as follows.

**Erasing disc
00:00 (Full)**

When erasing finishes, LCD will show the results as follows.

Full Erase
OK:01 Fail:00

5.12 Adv Setup

Function 12 Adv Setup lets you change the system configuration. This function includes 12 parts. They are UnderRun Protect, Overburn, Read Error Skip, Format HDD, Verify HDD, Burn-in, Update Firmware, Compare Firmware, H/W Diagnostic, Load Default, CD+G, and ISRC.

On the above figure press **ESC** to return to Function 11. Then, press **ESC** for 2 seconds to enter Function 12-01 as the following figure shows.

12-01. Adv Setup
UnderRun Protect

5.12.1 UnderRun Protect

On the above figure if you press **ESC**, you can enter Function 12 as the following figure shows.

12. Adv Setup

UnderRun Protect lets you control On and Off of Buffer Under Run Protection such as Burn Proof, SafeBurn, JustLink, Seamless Link, etc. Press **ENT** to enter the following figure. The default is On. Press ▼ to select Off.

UnderRun Protect
On

5.12.2 Overburn

On the above figure press **ESC** and ▼ to enter the following figure. Overburn lets you decide whether to copy beyond the limit of the CD or not.

12-02. Adv Setup
Overburn

Press **ENT** to enter the following figure. The default is Off. Press ▼ to select On.

Overburn
Off

5.12.3 Read Error Skip

On the above figure press **ESC** and ▼ to enter the following figure. Read Error Skip is to neglect any error that occurs during copying. Under normal circumstances, when an error occurs during copying, a message will appear on LCD. Yet, you can use Read Error Skip to copy some defective DVDs.

12-03. Adv Setup
Read Error Skip

Press **ENT** to enter the following figure. The default is Off. Press ▼ to select On.

Read Error Skip
Off

5.12.4 Format HDD

On the above figure press **ESC** and ▼ to enter the next figure. Format HDD is to partition the hard drive. But before formatting all data on the hard drive will be deleted.

12-04. Adv Setup
Format HDD

Press **ENT** to get the next figure. In DVD a partition occupies 5GB while in CD 1GB.

HD Partition
FormatSelect? DVD

If ARS-2022D doesn't connect with a hard drive, LCD will show the message below.

There is no HDD!

5.12.5 Verify HDD

On the above figure press **ESC** to return to Function 12, and then select Verify HDD. Verify HDD is to verify if the hard drive or any of its partitions can work well.

12-05. Adv Setup
Verify HDD

Press **ENT** to enter the next figure. Use ▲ ▼ to confirm Disk or Parti.

**Verify Disk or
Partition? Disk**

Press **ENT** to verify. After verification LCD will show the results as follows.

**Verify Hard Disk
OK!**

5.12.6 Burn-in

On the above figure press **ESC** and ▼ to enter the following figure. Burn-in is to simulate the copying progress many times. The time can be from 1 to 1000. After each cycle of simulation, the DVD on the DVD writer will eject automatically and recede for the next bout of simulation.

**12-06. Adv Setup
Burn-in**

Press **ENT** to enter the next figure. Test is simply a simulation.

**Burn-in
Test**

Press **ENT** and use ▲ ▼ to select the time of simulation such as 1, 2, 3...1000 or Run Continuous. The figure below shows Run Continuous.

**Sel burn-in num:
Run Continuous**

Press **ESC**, **ENT**, **▼** to select Erase & Copy as the following figure shows. Erase & Copy is to erase and write repeatedly. It is only for DVD rewriteable disk.

**Burn-in
Erase&Copy**

Press **ENT** and use **▲ ▼** to select the time of simulation such as 1, 2, 3...1000 or Run Continuous. The figure below shows Run Continuous.

**Set burn-in num:
Run Continuous**

5.12.7 Update Firmware

On the above figure press **ESC** and **▼** to enter the following figure. Update Firmware is to update firmware to the latest version. But you should get the version first.

**12-07. Adv Setup
Update Firmware**

You can get the newest firmware version from ACARD by e-mail, or download it directly from the web site: <http://www.acard.com> Then, unzip the file "cdxxx.bin" and copy it into a blank DVD.

After placing the DVD on the DVD-ROM, press **ENT**. The system will begin searching the new firmware and show the message on LCD as follows after it finds the new firmware. Then press **ENT** to update.

**Searching F/W---
XXX/XXXXX**

5.12.8 Compare Firmware

On the above figure press **ESC** and ▼ to enter the following figure. Compare Firmware is to compare the current firmware version and the newly downloaded version. It can prove if the downloaded version is the newest one.

**12-08. Adv Setup
Compare Firmware**

5.12.9 H/W Diagnostic

Press **ESC** and ▼ to enter the next figure. H/W Diagnostic is to test the system.

**12-09. Adv Setup
H/W Diagnostic**

Press **ENT** to enter the next figure. Follow the instructions on LCD to do the button test. After that, the system will do the self-test of SDRAM, the hardware connection test and flash test. All test results will be shown on LCD. It is the easiest way to know if the system can work well.

↑ ↓ **Enter ESC**
Holde ESC to exit

When the whole process finishes, LCD will show the message as follows.

Test finished

5.12.10 Load Default

On the above figure press **ESC** and ▼ to enter the next figure. Load Default is to make all changed settings recover to defaults.

12-10. Adv Setup
Load Default

Press **ENT** to enter the next figure. Use ▲ ▼ to confirm Yes or No.

Load Default
Config? Yes

When default loading finishes, LCD will show the results as follows.

Load Default
OK

5.12.11 CD+G

On the above figure press **ESC** and ▼ to enter the following figure. CD+G is a kind of special copying format. This function supports the special format.

12-11. Adv Setup
CD+G

Press **ENT** to enter the next figure. The default is Off. Press ▼ to select On.

CD+G Off

5.12.12 ISRC & MCN

On the above figure press **ESC** and ▼ to enter the following figure. ISRC and MCN are special copying formats. This function supports them.

12-12. Adv Setup ISRC & MCN
--

Press **ENT** to enter the next figure. The default is Off. Press ▼ to select On.

ISRC & MCN Off

Chapter 6 Troubleshooting

6.1 About LCD

After powering on if there is no LCD, please check if the connection of power cord is firm and the environment of power outlet is normal.

6.2 About Error Messages

During Copy, Test, Compare and Verify, etc. if you press **ESC** to abort, an error message will appear on LCD. Abortion may cause ARS-2022D to hang up, therefore you have to power on again.

If reading fails, an error message will appear on LCD. Please get a new source DVD to try again.

If ARS-2022D hasn't detected any device after powering on, an error message will appear on LCD.

6.3 About DVD-ROM/DVD Writer

If a DVD-ROM or DVD writer cannot read, please confirm the format of the source DVD and check if it is damaged.

Use any DVD writer to read the source DVD. If it works, the DVD-ROM is probably defective or not compatible with the source DVD.

Use a fine DVD writer as the data reader, and set the "Read Speed" at minimum.

6.4 About Buttons

If you press any one of the four buttons on the panel, but there is no response, it is perhaps that the button cannot function well. Please inspect the jumper setting.

6.5 About DVD Writer Not Readable

After copying if the DVD writer is unreadable, please use Compare to examine, or get another DVD-ROM to test.

6.6 About High Failure Rate

If the failure rate of copying is high, please do the following things to improve.

- Lower the speed of DVD writer
- Inspect if the blank disk's quality is bad.
- Update the firmware.
- Inspect the DVD writer's maximum writing speed. If the speed is over 24X, copy the data to a hard disk first, and then transmit to DVD.

6.7 About Firmware Update

If you cannot update the firmware, please inspect the BIOS program. Perhaps you have downloaded a wrong program, or let a zipped file be written into DVD. The zipped file should be unzipped first.

Failure in firmware update may cause ARS-2022D to fail in booting. Under the circumstance, please return the control board to ACARD for repair.

6.8 About Function 12 and Cancellation

If you want to execute function 12 Advanced Setup, you can press **ESC** for 2 seconds. And during operation if you want to cancel a function like Copy, Test, Verify and so on, you can press **ESC** for 2 seconds, too.

Appendix 1 List of Functions

- 1 Copy
- 2 Test
- 3 Test & Copy
- 4 Verify
- 5 Compare
- 6 Prescan
- 7 Disc Info
- 8 Select Source
- 9 Image (It works only when a hard disk is connected)
 - 9.1 Load
 - 9.2 Delete Image
 - 9.3 Image Info
 - 9.4 Compare Image
 - 9.5 Select Image
 - 9.6 Select Src Drive
- 10 Edit Track (for CD only)
 - 10.1 CD to CD
 - 10.2 CD to HDD (It works only when a hard disk is connected)
 - 10.3 Play Audio Track
 - 10.4 Close Session
- 11 Setup
 - 11.1 Language (English)
 - 11.2 CD Burn Speed (Default is Auto)
 - 11.3 DVD Burn Speed (Default is Maximum)
 - 11.4 Read Speed (Default is Maximum)
 - 11.5 Auto Start Drive (Default is Off)
 - 11.6 Startup Menu (Default is Copy)
 - 11.7 Auto Verify (Default is Off)
 - 11.8 Auto Compare (Default is Off)
 - 11.9 Auto Prescan (Default is Off)
 - 11.10 Eject Disc (Default is Eject Good Only)

AEC-7763LC/LD & ARS-2022/2022D

- 11.11 Burn On The Fly (Default is On)
- 11.12 Burn Mode (Default is DAO)
- 11.13 Button Sound (Default is On)
- 11.14 Device Info
- 11.15 System Info
- 11.16 Quick Erase
- 11.17 Full Erase
- 12 Adv Setup
 - 12.1 UnderRun Protect (Default is On)
 - 12.2 Overburn (Default is Off)
 - 12.3 Read Error Skip (Default is Off)
 - 12.4 Format HDD
 - 12.5 Verify HDD
 - 12.6 Burn-in
 - 12.7 Update Firmware
 - 12.8 Compare Firmware
 - 12.9 H/W Diagnostic
 - 12.10 Load Default
 - 12.11 CD+G (Default is Off)
 - 12.12 ISRC & MCN (Default is Off)

Appendix 2 LCD Messages

1. Normal Conditions:

Initialize SDRAM	Initialize the memory of the system.
Detect Drives	Detect what drives are connected with the system.
User Abort!	Cancel the job during operation.
Analyzing	Analyze the source disc.
Source Drive Not Ready	Source drive is not ready to read.
Target Drive Not Ready	Target drive is not ready to write.
Source Disc Not Ready	Source disc is not ready to be read.
Target Disc Not Ready	Target disc is not ready to be written into.
Erasing disc	The system is erasing the data on the disc.
Fail to get Drive Info!	The drive information cannot be obtained.
Fail to get Src Disc Info!	The information of source disc cannot be obtained.
Save new config Fail!	The new setting of configuration cannot be saved.
Load Default Config?	Do you want to load the default settings?
Src&Tgt can't in the same channel	During comparison the source and target discs cannot be in the same channel.
Preparing	The system is preparing to record.
Check Target Please Wait	The system is checking the target device.
Audio Disc!!! Can't compare!	The system cannot compare the audio discs.
Identical	The comparison results are the same.
Read disc error	During comparison the disc cannot be read.
Cannot read TOC	The system cannot read the contents of disc.
TOC not match	The comparison results are not the same.
Source Disc Empty!!!	The source disc doesn't contain any data.
Target overflow	The target disc hasn't enough capacity to store new data.
Target Disc Not Empty!!!	The target disc still has data.

Press a Key to Eject Good Disc... Press any key to eject the good disc after copying
Press a Key to Eject Fail Disc..... Press any key to eject the failed disc after copying.
DVD-RW does not Support the Func..... DVD-RW doesn't support this function.
Hold ESC to exit..... Press **ESC** for a second to terminate the test.
All data will be lost, erase?..... All data on the disc will be lost. Confirm the erasing of data.
Erase Finished..... The erasing of data comes to an end.
No Eraseable Disc in DVD-RW!!.... The disc on the DVD-RW device is not rewritable.

2. Connecting with a HDD:

HDD not Format!..... The hard disk hasn't been formatted yet.
Format HDD?..... Ask if you want to format the hard disk.
All data will be lost, format?..... All data on the hard disk will be lost. Confirm the formatting of hard disk.
Format HDD OK! The Formatting of hard disk has been completed.
Image load OK..... The image is successfully loaded from DVD to the hard disk.
Image load Fail..... The image isn't successfully loaded from DVD to the hard disk.
HDD too small to handle image!..... The hard disk hasn't enough capacity to store the data image (at least 5Gbytes).
No Valid HDD!..... The system cannot find a hard disk.
HDD too small The capacity of hard disk is too small.
No Image in Partition xx..... There is no data image in partition xx.
Image Exists Overwrite?..... There is a data image in the current partition. Confirm the overwriting of data.
Delete Image in Partition xx?.... Confirm the deleting of data image in partition xx.
Partition Damage The partition is damaged.
Verify Disk or Partition?..... Do you want to verify the hard disk or just a partition?

Verify Hard Disk OK!..... The hard disk is verified successfully.
Verify Hard Disk Fail!..... The hard disk is not verified successfully.
Verify Partition Header!..... Verify the partition header.
Select HD First!..... Select a formatted hard disk at first.

3. Audio Editing:

Lost selected Tracks?..... Abort the selected tracks and delete them.

End edit disc and burn?..... Finish the music disc editing and start to copy.

Continue edit next Disc?..... Ask if you want to continue the music disc editing.

Target Overflow Re-Select..... The disc capacity is not enough to store the selected tracks. Please select again.

Close all disc's session?..... Confirm the closing of disc sessions.

Can't edit HDD..... The hard disk cannot be edited as a source audio disc.

NO AUDIO track in this disc..... The source disc has no audio track.

Insert next disc..... Insert the next audio disc.

Sessions were closed already!..... The disc sessions have already been closed.

Burn or Move to partition?..... Do you want to directly copy the data into disc or move them to the partition.

Tgt overflow, del last trk?..... The disc capacity is not enough to store the selected tracks. So, do you want to delete the last track?

Ins empty disc Continue?. Do you want to insert a blank disc and continue copying?

4. Firmware Update:

Invalid firmware Disc..... The disc doesn't contain a valid firmware.

Updating F/W.....The system is updating the firmware.

AEC-7763LC/LD & ARS-2022/2022D

Update F/W xxx to yyy?..... Do you want to update the firmware version from xxx to yyy?

Searching F/W The system is searching for a valid firmware.

Check Sum Error!..... The updated firmware has errors.

Source can't be Hard Disk!..... During comparison the source cannot be hard disk.

Last update F/W OK!..... The firmware is updated successfully.

Last update F/W Fail!..... The firmware is not updated successfully.

Flash ROM fail!..... Data cannot be written into Flash ROM.

